

System-Wide Features



PowerShift is a full-featured, comprehensive enterprise resource planning (ERP) system designed to manage and control all aspects of the enterprise. You configure (and reconfigure, as desired) how you use PowerShift to support simple or complex business environments. PowerShift is FLEXIBLE. It supports lean manufacturing concepts with or without Kanban. It supports make-to-stock, make-to-order, configure-to-order and engineered-to-order items. Forecasts or master scheduled orders can drive the planning system. Production employees enter completion data in real time to provide complete visibility into shop floor operations. Radio frequency (RF) data collection is supported and PowerShift includes integration to other systems. PowerShift is sold as a complete package: no surprises with additional purchase requirements after the implementation starts. Rapid system implementation is a proven process, and total data migration makes PowerShift the leader and the best choice for a cost-effective and successful ERP implementation.

System options determine how PowerShift operates, enabling you to immediately adapt to changing conditions without costly consultants or programmers

Sample Lookup

Find Data Quickly with Lookups

- Common lookup routines are used throughout PowerShift
- Each user determines how lookups are performed; one user might look for items by number and another by description or buyer
- Filters limit display to open orders, active records, etc., as the user chooses

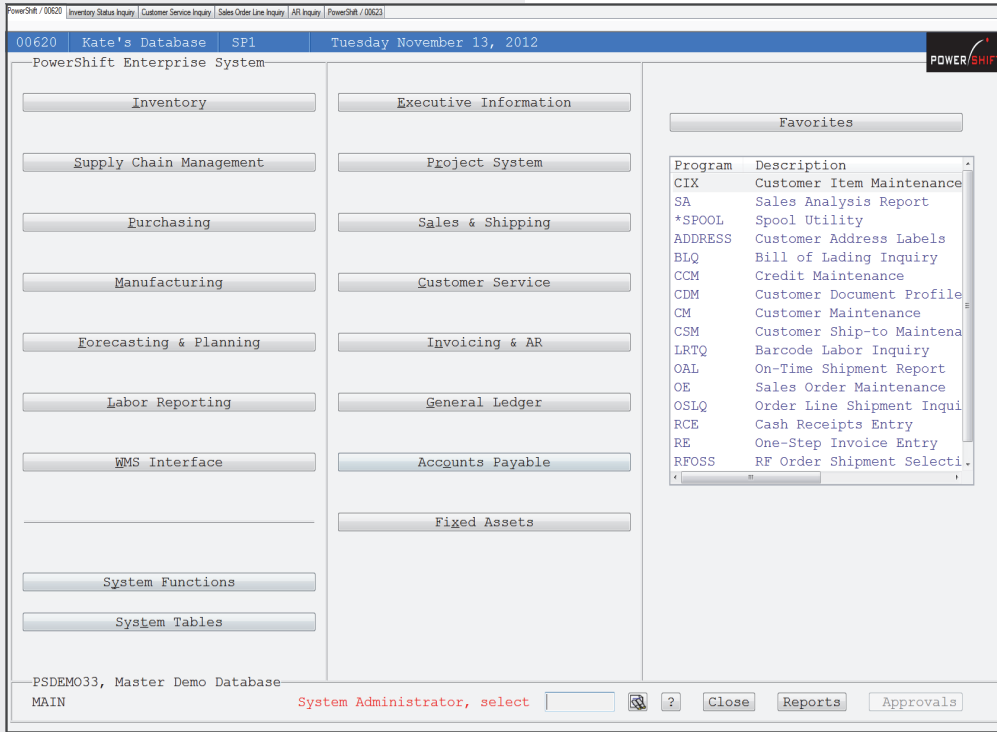
Sample Lookup Data:

Item no	Material	Stk UOM	Prod cl	Item type	Buyer
100SUP	Pref vendor	EA	FP	Finished good	AA
101	Prod cl	EA	FP	Finished good	AA
101-1	Size	EA	RM	MRP dependent item	AA
101-2	Stk UOM	EA	RM	MRP dependent item	AA
101-3	Style	EA	RM	MRP dependent item	AA
11011-0	Xref	EA	CUST	MRP dependent item	AA
11011-002	Lock assembly	EA	CUST	MRP dependent item	AA
11011-003	Light fixture	EA	CUST	MRP dependent item	AA
11011-004	Custom Hardware Kit	EA	CUST	MRP dependent item	AA
11011-005	Hutch, cherrywood	EA	CUST	MRP dependent item	AA
11011-006	Curio cabinet, cherry...	EA	CUST	MRP dependent item	AA
11011-007	Marchaum serial numbered	EA	RM	MRP dependent item	AA
		EA	CUST	Finished good	AA
		EA	CUST	Finished good	AA
		EA	CUST	Finished good	AA
		SH	RM	MRP dependent item	BUY
		BARS	RM	MRP dependent item	BUY
		EA	RM	MRP dependent item	AA
		EA	FP	Finished good	AA
		EA	RM	MRP dependent item	AA
		EA	RM	MRP dependent item	AA
		EA	RM	MRP dependent item	AA

Sample Lookup Features:

- Drag & drop columns to see data presented the way you want it
- Size columns as desired
- Use scroll bars to see more

Standard User Interface



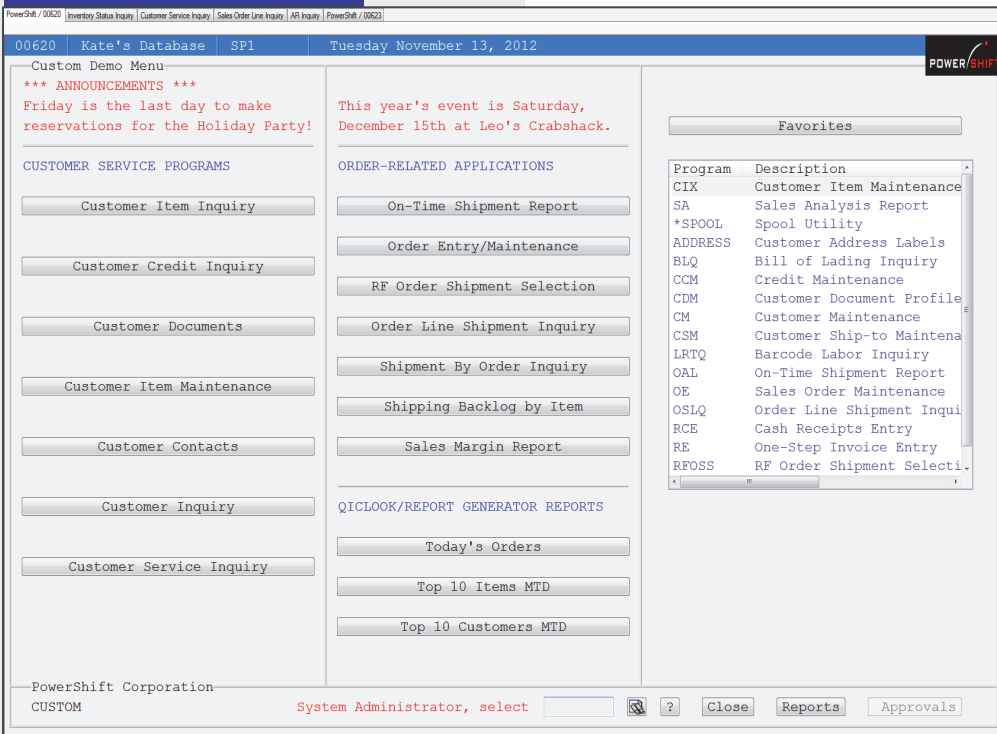
- Accepts point-and-click as well as keyboard input.
- Accelerator keys speed keyboard entry.
- Terminology in all applications is consistent; definitions are provided in the online glossary.
- F1 displays online help, including:
 - Overviews by functional area (e.g., inventory, general ledger, purchasing).
 - Background information provides higher level details about functions and includes formulas for calculated fields.
 - Road map outlines job streams so you can see the operational sequence of related programs.
 - Detailed help defines fields, acceptable entries, and possible actions available within a program.
- Each user can define favorite applications for most efficient execution.
- Notes can be transferred from one application to another without rekeying; transfer can be automated.

The PowerShift Main Menu

Navigation

- Run a program by clicking a menu button, pressing its accelerator key, or by entering the program name directly.
- Select field values from lists you create to standardize entry.
- Lookup field values from drop-down menus.
- Jump from one program to another without re-entering the record information.
- View supporting information with the click of a button or by pressing an accelerator key.
- F1 displays help for the currently running program.

Sample Custom Menu



Customizable Menus

- Pass parameters to and execute custom reports
- Design menus by work activities or by job stream
- Users manage their own favorites
- Favorites re-sequence by frequency of use
- Approvals button is active if user has approvals pending
- You control the initial menu displayed for each user

Flexible Reports & Inquiries

- Every report and inquiry offers runtime, sort, selection and program options.
- Runtime options include the output device and whether or not selected options are printed on the report.
- Sort options include sort order, report breaks and whether or not to use totals only reporting.
- User-specified selection options.
- User-specified program options such as actual, average or standard costs.
- Date shortcuts can be used in options.
- Save selected options by user.
- View reports on the screen with the PDF viewer.
- Add comments and execute key word searches and forward and backward scrolling on displayed reports.

Runtime | Sort | Selection | Program | Program2

Inventory Sort Options

Sort options	Print order	Reverse order?
Branch	<input type="text"/>	<input type="checkbox"/>
Item number	<input type="text"/>	<input type="checkbox"/>
Product class	<input type="text"/>	<input type="checkbox"/>
Product subclass	<input type="text"/>	<input type="checkbox"/>
Inventory acct code	<input type="text"/>	<input type="checkbox"/>
Size	<input type="text"/>	<input type="checkbox"/>
Material	<input type="text"/>	<input type="checkbox"/>
Style	<input type="text"/>	<input type="checkbox"/>
Color	<input type="text"/>	<input type="checkbox"/>

Runtime | Sort | Selection | Program

Sales Order Selection Options

Selection options	From	To
Branch or branch grp	CA GROUP	California -- All Regions
Org or org group	<input type="text"/>	<input type="text"/>
Customer number	<input type="text"/>	<input type="text"/>
Item number	<input type="text"/>	<input type="text"/>
Order number	<input type="text"/>	<input type="text"/>
Currency	<input type="text"/>	<input type="text"/>
Ship branch	<input type="text"/>	<input type="text"/>
Expected ship	<input type="text"/>	<input type="text"/>
Date ordered	<input type="text"/>	<input type="text"/>
State	<input type="text"/>	<input type="text"/>
Product class	<input type="text"/>	<input type="text"/>
Customer name	<input type="text"/>	<input type="text"/>

- Save any PowerShift report multiple times with different sort, select & program options
Example: Save different AR trial balance reports with aging by due date, aging by invoice date and another to list invoices that are 61 or more days late
- Date shortcuts (e.g., today, beginning of the month, end of month, etc.) minimize changes to selected/saved options

Runtime | Selection | Program

Purchase Order Program Options

Include history?	<input type="checkbox"/>
Print sales tax licenses on PO?	B
Exclude closed PO lines?	<input type="checkbox"/>
Exclude voided PO lines?	<input type="checkbox"/>
Print engineering drawing number on PO?	<input checked="" type="checkbox"/>
Print surcharge detail?	<input type="checkbox"/>
Print GL account information?	<input type="checkbox"/>
Print compliant manufacturers?	N
Certificate of compliance message	<input type="text"/>
Print demand order information?	<input type="checkbox"/>
Print signature line at bottom of PO?	<input checked="" type="checkbox"/>
Output for EPI import?	<input type="checkbox"/>
Print UOM description?	<input type="checkbox"/>
Print vendor item number	Y
Print P=Date promised or W=Date wanted	W

SQL Accessibility

Access PowerShift from:

- Microsoft Excel
- Microsoft Access
- Crystal Reports
- any ODBC-enabled application

Approvals

- You decide where approvals are required, including: purchases, sales orders, sales shipments, sales invoices, sales credit memos, bills of material and ECOs.
- You determine criteria that triggers that approval(s) is required.
- Approvals button on all of a given user's menus indicates the need for approval.

Email Integration

- Exceptions are emailed to appropriate parties for resolution.
- CC or BCC documents to any number of recipients.

Security

- You choose who can run what programs.
- Assign users to categories to simplify who accesses what.
- You decide who can update the general ledger.
- You decide the default menu for the user.
- You decide if the user can override their default branch group.
- You decide if the user can override their default printer assignment.

Order / Batch Numbers

- You decide how the number is generated.
- You decide the length of the number.
- Optionally include a constant as part of the number.

Job Scheduler

- You decide when reports are run.
- You choose how scheduled reports are distributed (e.g., via email, fax and/or printed to local or remote printers).
- Schedule GL registers and journal updates as well as reports.

User Fields

- User fields enable you to add fields to master files for custom data.
- You decide the size, type (e.g., alphanumeric, numeric, Y/N or date) and if an entry in the field is required or optional.
- Build tables to validate user fields.
- User fields are integrated into standard lookups.
- Print user fields on documents as desired.

Notes

- Master files include the ability to add up to 9999 lines of notes.
- Notes can be assigned as printing or non-printing and in addition the codes from 0-9 can be used for selective printing on specific document copies.
- A common user interface is used for the maintenance of all notes.

Addresses

- A common user interface is used for the maintenance of all address data.
- Enter the zip/postal code to bypass entry of city and state/province.
- State/provinces and countries are validated by a user-maintainable table.

Field Validation

- Many fields are validated against user-defined tables.
- Enter data directly or select from a displayed list.
- Fields are validated to ensure the entry of accurate data.

Date Shortcuts

- Numerous date short cuts for setting beginning-of-month or end-of-month or a set number of days in the past or future.
- Use date short cuts when saving report and inquiry options to eliminate need for periodic changes.
- A date can also be selected from a calendar or entered from the keyboard.

Document Management System

- You determine when the document is generated.
- You define document characteristics (e.g., logos, boiler plate text, duplex printing).
- You specify to whom and how documents are distributed (e.g., send a hard copy to the customer, fax the outside sales rep, and email copies to the affected buyers).
- Print custom fields and notes on documents.
- You can add custom labels or applications on a generated document as a standard part of the document setup.

PowerShift Supports Output to:

- ◆ Printers
- ◆ Spoolers
- ◆ Email
- ◆ SQL/ODBC
- ◆ PDF
- ◆ HTML
- ◆ Text
- ◆ XML
- ◆ CSV
- ◆ Fax
- ◆ Excel
- ◆ EDI